

PART NO. DESCRIPTION
 5020 **Train Sound Air Horn**
 Smaller Size with Same sound as the Larger Ones



5010 **Horizontal Air Horn**
 6 Chrome Plated Brass Trumpets, Mounting Hardware & Solenoid Valve

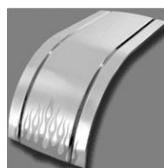


Chrome Stacks NEW SIZES
 7736R 36" Curved Extension 7" Reduced to 5" OD Plain Bottom
 7748R 48" Curved Extension 7" Reduced to 5" OD Plain Bottom
 7760R 60" Curved Extension 7" Reduced to 5" OD Plain Bottom

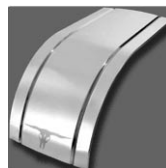


Mitre Cuts Also Available

Tandem Fenders
 NEW Monogram Series (Semi Smooth/Corrugated Series)
 The Ultimate in Protection and Personalization for your Truck



Flame



Lighthouse



American



Logo

Quarter Fenders



Air Valve Knobs

Maltese Air Valve Knob
 Maltese Deluxe Knobs
 Maltese Cross Bezel

